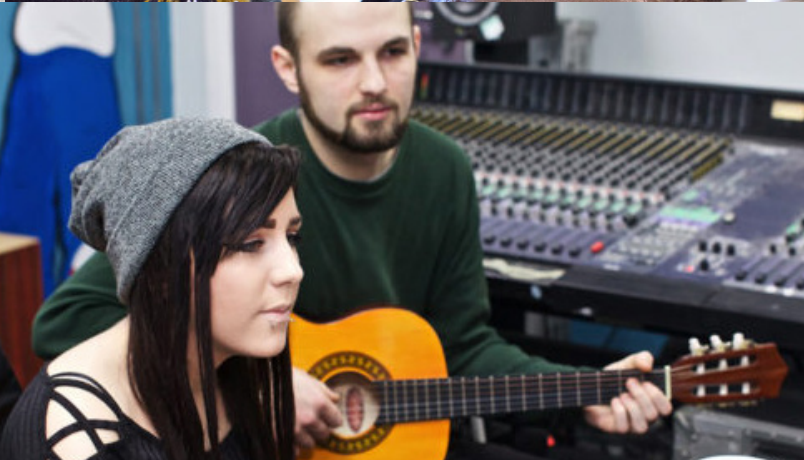


Introducing **Voluntary Action LeicesterShire**



Voluntary Action LeicesterShire

Thank you for your interest in learning about Voluntary Action LeicesterShire (VAL).

VAL aims to work with people to help them change their lives whether through direct support services such as volunteering, personal support, or assistance into employment/training or through support to the 3,800 local community organisations across the City and County.

We are immensely proud of our 55 year plus history and track record in delivering excellent services and championing local voluntary action. We have a fantastic and experienced staff team (75 FTE) and a committed cohort of volunteers.

As an independent charity we have succeeded in ‘weathering the storm’ of a decade of public sector austerity and continue to accessible, agile and responsive to community needs. Throughout our history we have developed new innovative services, for example the now international charity Home-Start began through VAL volunteers in Leicester.

We continue to support a wide range of new community activity, and encourage thousands of local people to volunteer in their community. This has been clearly demonstrated through the 2020-21 pandemic where VAL supported the rapid set up of mutual aid groups as well as working with existing community groups. We worked alongside communities to ensure the most vulnerable were looked after, we supported the Health community with the rapid deployment of volunteers to support door-to-door Covid 19 testing and most recently we have facilitated 1000’s of volunteers in support of the vaccination centres. Looking forwards we are working with colleagues in the community to develop a future manifesto for local voluntary action and liaising with the local public sector about new public services.

We have a strong, collegiate and committed Trustee Board, providing strategic guidance, challenge and support to our Chief Executive, Executive Management Team and offering good governance oversight to VAL. <https://valonline.org.uk/our-team/>

Our most recent Annual Report is available for viewing here: <https://valonline.org.uk/val-annual-review-2020-21/>

At present the majority of our £3 million annual budget is secured until March 2023 but we are already looking for our next key role and planning strategically. We own our central Leicester building and are working hard to have a spread of activities and income sources to enhance our sustainability. We intend to be supporting Leicester and Leicestershire communities for many years to come.



Linda Jones - Chair



About VAL

VAL Vision Statement

VAL’s vision is for people in Leicester & Leicestershire to be able to change their lives for the better

VAL Mission Statement

To support, strengthen and provide services for people and communities to achieve social change

VAL Values

The core values for VAL describe how we plan to achieve our mission. These guiding principles dictate our behaviour and help to determine if we are on the right path and fulfilling our goals.

VAL’s values are:

- 1. Passionate:**
We use our drive and commitment to energise, engage and inspire others.
- 2. Inclusive:**
We create a culture of warmth and belonging, where everyone is welcome.
- 3. Transformational:**
We strive to deliver our very best with a ‘can do’ approach with innovation and continuous improvement.
- 4. Integrity:**
We uphold the highest standards of integrity, honesty and independence in our actions, and are accountable to our stakeholders.

Commitment to Equality, Diversity and Inclusion

VAL’s values are unequivocally anti-racist and much of what we do locally supports and helps Black people and Black communities to change their lives for the better. This does not mean that we should not continuously challenge ourselves and seek to improve the support and solidarity we offer. The Black Lives Matter (BLM) movement was a dramatic wake up call to alert all of us that racism and discrimination remained real for huge numbers of people in the communities we serve. It has been too easy for people in Leicester, and us in VAL, to become complacent about the on-going impact of racism.

We often celebrate our harmonious community relationships and hold ourselves up as a good example – but we are nowhere near achieving what we should be. Too many in our Black communities continue to face daily racism, receive worse services/support, and as a result cannot achieve their full potential.

VAL must do more to actively resist the impact of discrimination on our Black communities. We will:

- Examine how we consciously and unconsciously act as an organisation.
- Measure our progress and the impact of our work with Black communities to ensure we are making an active and positive difference.
- Give voice to and celebrate the contribution of Black individuals and organisations.(for example by active engagement in Black History Month)
- Call out discrimination and racism and stand in solidarity with our Black communities.

The VAL Trustees have committed to The Equality, Diversity and Inclusion Principle of the Charity Governance Code – and regularly review progress and plans for VAL.

VAL Strategic Aims (2020 -23)

1 VAL empowers and invests in people to enable them to improve their lives

Delivery:

- Providing support for people with Learning Disability to live fulfilling lives
- Enabling people to enter employment or training.
- Supporting people into volunteering roles in VAL and in other organisations.
- Supporting and developing staff at VAL



2 VAL provides a voice for and supports local voluntary & community groups who strive to meet community needs in a changing environment

Delivery:

- Providing platforms for voluntary and community groups to engage with policymakers and funders.
- Supporting new voluntary and community groups and initiatives to start up.
- Supporting the development and sustainability of local voluntary and community groups and initiatives
- Enabling local voluntary and community groups to attract resources and deliver effectively.



3 VAL brings together communities, the private and public sectors to improve local lives

Delivery:

- Engaging in partnership work with voluntary, private and public sectors
- Supporting consortium and multiagency working
- Maintaining information/data and reporting on the voluntary and community sector in Leicester and Leicestershire
- Celebrating the scope and impact of local community action – sharing best practice



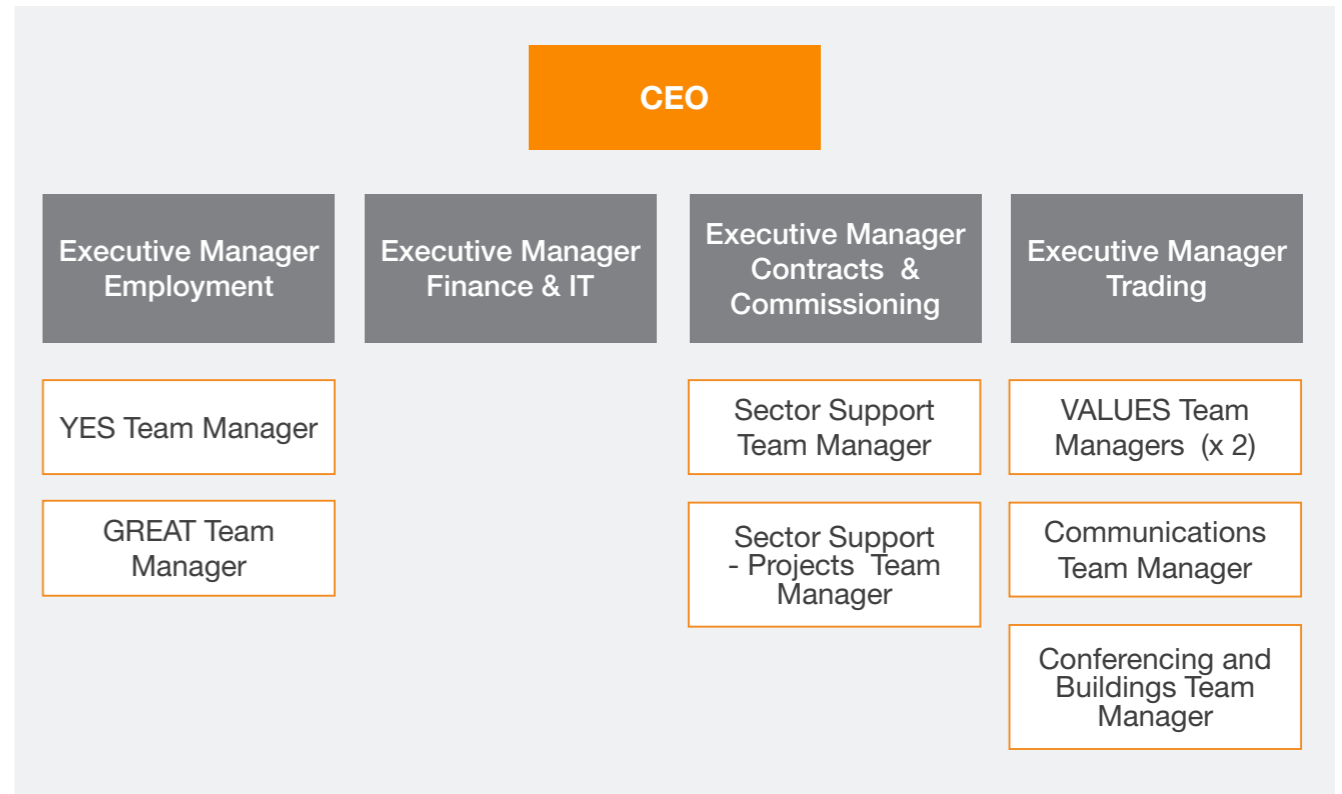
Staffing arrangements

In order to deliver these Strategic Aims VAL employees more than 75 FTE staff and a range of support volunteers. Reporting to the Trustee Board is the Chief Executive and Executive Management Team.

This group leads the strategic implementation for VAL and in turn they are supported by the Team Managers who deal with day to day operations.



A simple management chart is shown below:



Our services

Voluntary Action LeicesterShire provides support to a wide range of individuals and groups across Leicester and Leicestershire.

VAL Volunteering

VAL runs the Volunteer Centre for Leicester and Leicestershire so more people are able to be active in their communities through volunteering.

VAL provides support for local voluntary and community groups so that they can operate effectively. The greatest areas of need are: fundraising, volunteering, governance and legal issues; 60% of groups we support are small community organisations.

<https://valonline.org.uk/recruit-volunteers/>



VAL Sector Support

VAL enables local voluntary and community groups to influence and shape policy. We inform local groups about policy decisions and the implications of the changes, mainly in the areas of children and young people, families, and health and social care.

We are also increasingly supporting local voluntary and community groups around economic development issues.

<https://valonline.org.uk/sector-support/>



VALUES

Our VALUES service supports adults with learning disabilities to be a part of their community through: finding employment, volunteering opportunities, training to help them travel independently and enabling people to take part in social and leisure activities.

We support over 100 people each year in the city and the county. <https://valonline.org.uk/values/>



VAL Meeting & Conferencing

VAL has a fully accessible and centrally located building that accommodates our offices and a base for a range of other organisations and businesses.

We also provide flexible and Covid secure space for conferences, meetings and events, attracting a range of customers from public, private and voluntary and community sectors. It aims to provide excellent facilities and customer service in the city, as well as generate income that can be reinvested in the charitable work of VAL.

<https://valonline.org.uk/meeting-and-conference/>



Our Building Better Opportunities projects (the YES project for young people, and the GREAT project for families) are funded by the BIG Lottery and EU to support people into employment from across Leicester and Leicestershire. We are also delivery partners in another BBO project enabling people to use volunteering to access employment (the WILL project)

The GREAT Project

The GREAT Project is designed to help members of families move towards employment or training.

GREAT offers a holistic, person-centred service, which is tailored to each family's unique needs. As a participant on the project, each person will have access to a range of sessions focused on helping them to achieve career goals.

Sessions are interactive and include one-to-one support and workshops, building skills and confidence. In addition, access to health & wellbeing support, confidence building courses, industry tours and work placements.

<https://valonline.org.uk/the-great-project/>



The YES Project

The YES Project is a free service that began in 2016 with the aim of supporting young adults, aged 15-24, that are not in employment, education or training (NEET).

The YES Project is a partnership of seven organisations and is managed by Voluntary Action LeicesterShire (VAL) and includes - The Prince's Trust, Bangladesh Youth & Cultural Shomiti, Soft Touch Arts, The Bridge, Leicestershire Cares and Highfields Community Association. The project's purpose is to support these local young people to overcome any challenges and barriers that have prevented them from finding a job or seeking further education

<https://valonline.org.uk/the-yes-project/>



The Work.Live.Leicestershire (WiLL) programme

The Work.Live.Leicestershire (WiLL) programme helps people who are economically inactive or unemployed who are living in rural Leicestershire to move into job search, training, or employment.

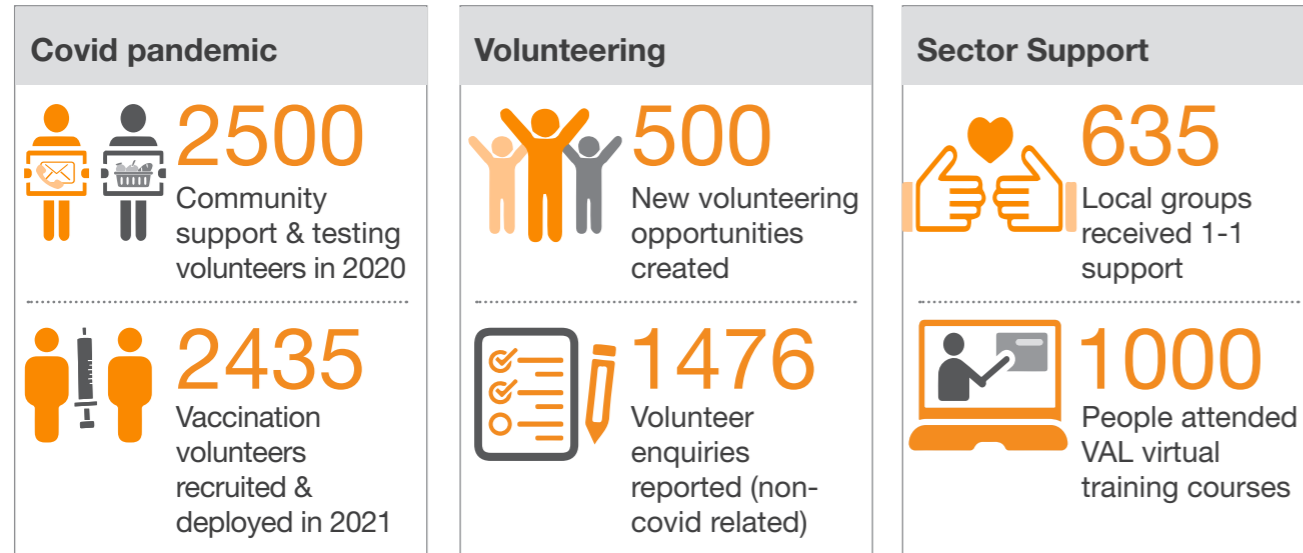
Working to help support people living in rural Leicestershire (Hinckley and Bosworth, North West Leicestershire, Melton and Harborough), the programme will focus on filling gaps in current services, providing access to holistic, tailored support and breaking down the barriers to people entering work or learning. The project will also help people to improve their health and wellbeing, gain skills and work experience, and have improved confidence, motivation and social engagement.

<https://valonline.org.uk/work-live-leicestershire/>

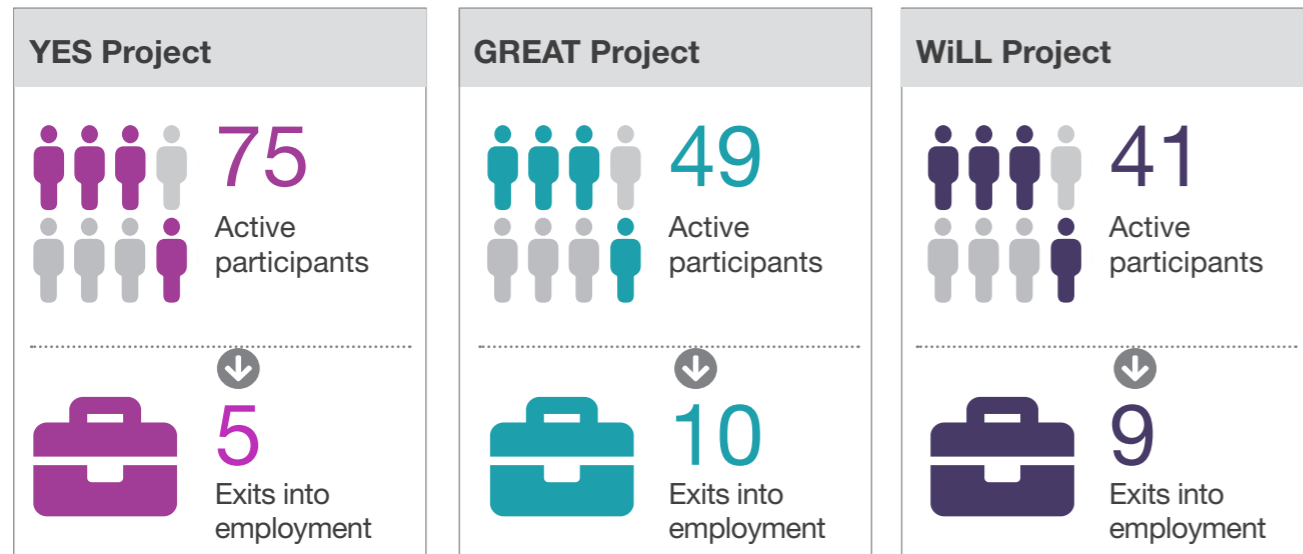


Our Impact

VAL's Key metrics from 2020-21



Building Better Opportunities



VALUES



VAL Finances

As a Registered Charity (No. 509300) and Company Limited by Guarantee (No. 01357513) VAL has to submit its annual audited accounts to the Charity Commission and to Companies House.

The last 5 years of our audited accounts are available for inspection on the Charity Commission website (www.gov.uk/government/organisations/charity-commission)

Under Charity Law we have to apply our income solely in advancing our charitable purposes, the Trustee Board are responsible for ensuring this is the case.

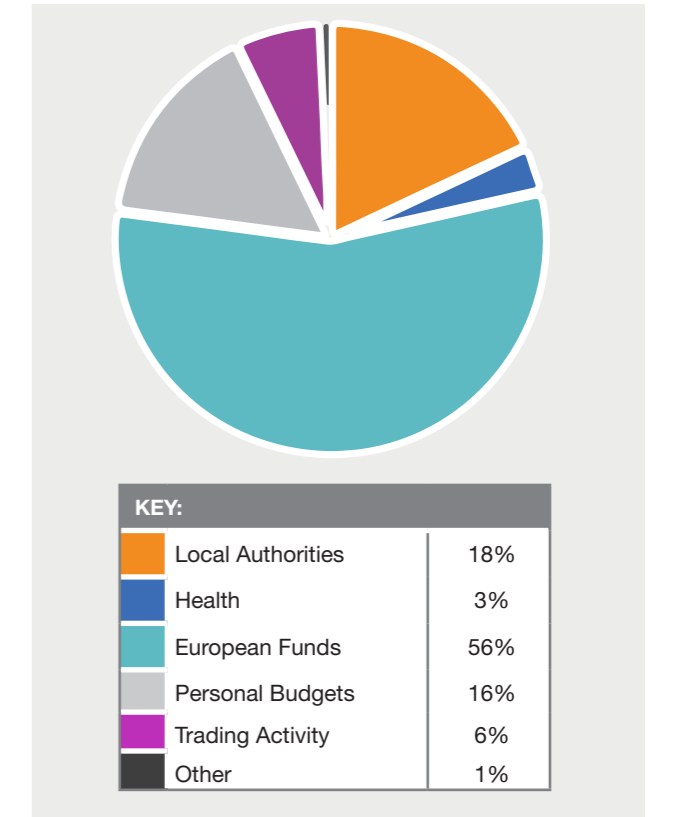
VAL has a variety of income sources as shown in the Pie Chart for the current financial year. At present over half of our income is linked to European Funds that support local people into employment – these come to an end in 2023 though we expect the UK Government to continue investment in this area (subject to successful bid from VAL).

We also have income from a range of contracts with local public sector organisations primarily to support local community groups and volunteering – these tend to be on 1-3 year tendered contracts.

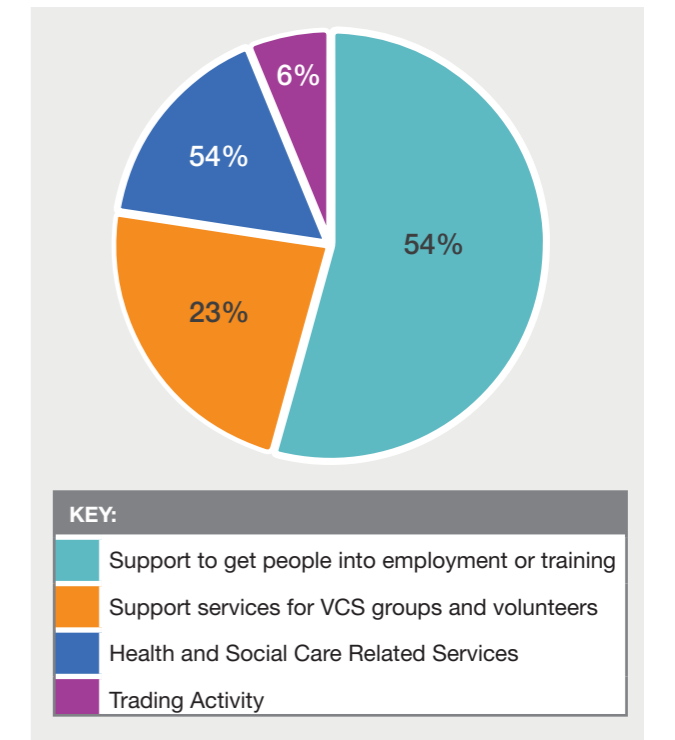
Our support service for people with Learning Disability has a primary income source of the personal budgets that a social worker assessment awards to an individual. Individuals have a range of service providers they can choose including VAL's VALUES service.

Our trading income is primarily through letting offices and meeting rooms in the VAL building.

Income sources 2021/22



Expenditure 2021/22



Get in touch:

Voluntary Action LeicesterShire

9 Newarke Street
Leicester
LE1 5SN

Contact us on:



0116 257 5050



helpline@valonline.org.uk

Follow us on social media:



[@valonline](https://twitter.com/valonline)



[Voluntary Action Leicestershire](https://www.linkedin.com/company/voluntary-action-leicestershire)



[@voluntaryactionleics](https://www.facebook.com/voluntaryactionleics)

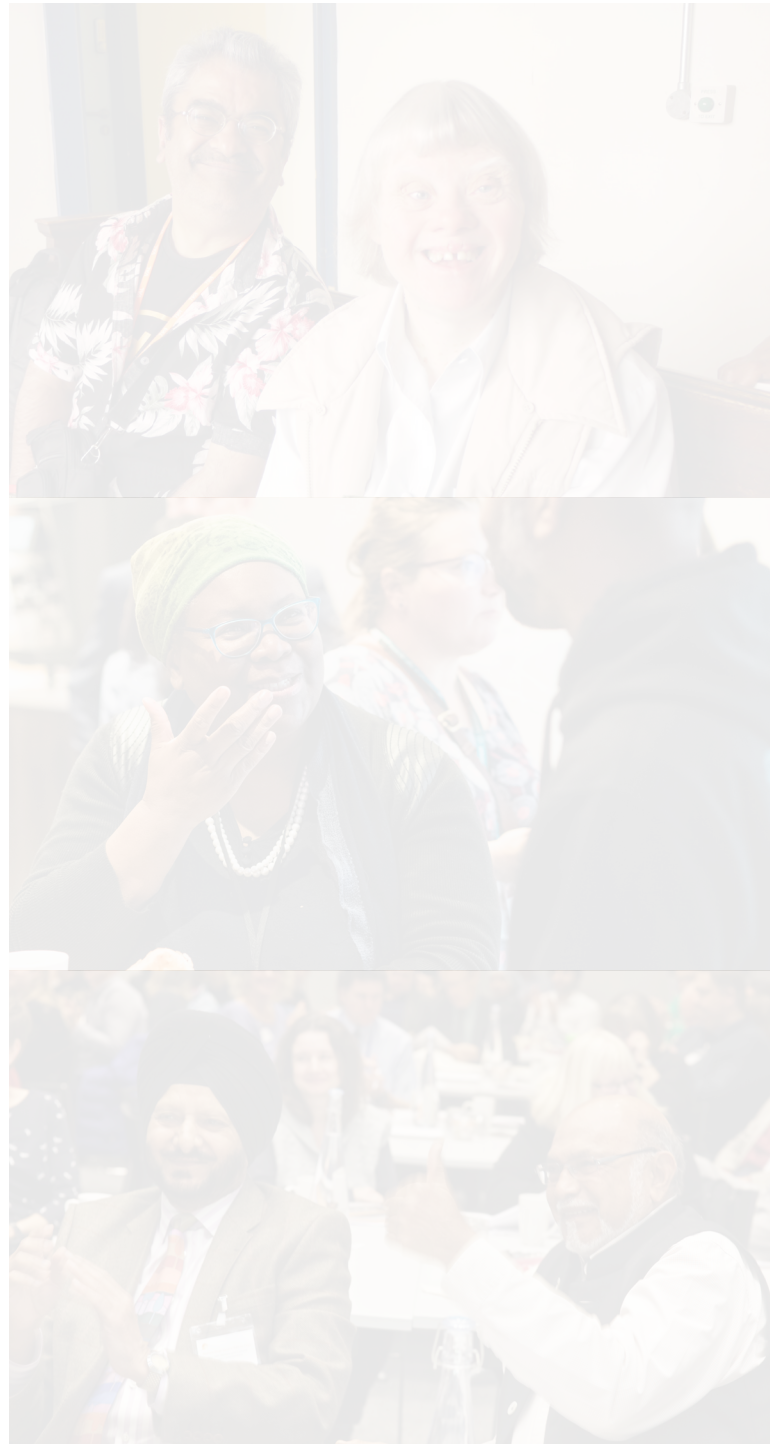


[@voluntaryactionleics](https://www.instagram.com/voluntaryactionleics)

To find out more about what VAL does, you can visit our website at:

www.valonline.org.uk

November 2021



VAL Helping people change their lives for the better